



EMERGENCY ACTION PLANS AND OCCUPATIONAL SAFETY

www.dplajrezidans.com

2025



***‘Our Precautions are Strong, Your
Vacation is Safe’***

01

Emergency Action Plans

They are plans designed to minimize loss of life and property in the event of potential emergencies such as fires, earthquakes, floods, and accidents.

02

Occupational Safety Management

It is a set of measures taken to ensure a healthy and safe working and living environment, prevent disasters risks, and provide a rapid response to potential disasters situations.

We Offer an Exclusive Lifestyle and Vacation

D'Plaj Residence offers you a delightful and comfortable vacation with its beachfront location in Yalıkavak, Tilkicik Bay, elegantly furnished modern Residence apartments, a spacious Blue Flag-certified beach, and services designed to make your life easier.

Located just 3 km from Bodrum's attraction hub, Yalıkavak Marina, D'Plaj Residence offers a range of amenities, including Villa Azur Beach Club & Restaurant, a kid's club, a heated pool, a spa, a fitness center, and parking/valet/transfer services. It provides guests with 38 Residence apartments in 1+1, 2+1, and 3+1 options.

D'Plaj strives to provide a comfortable and seamless vacation experience by taking all necessary measures to make life easier for our guests and employees.



EMERGENCY ACTION TEAMS



D'PlajResidence EmergencyResponse Team has been established to ensure rapid and effective intervention in the event of potential emergencies.

✦ EmergencyCoordinator and Spokesperson: Halil Yorulmaz

✦ AssistantCoordinator/ Deputy: İzzettin Aslan

Four main teams are responsible for emergency management:

● Firefighting Team– Fights Fires. (Team Leader: Cahit Sözer)

● Rescue Team– Carries out rescue operations for life and property. (Team Leader: Artun Kaya)

● Protection Team– Ensures safety and prevents risks. (Team Leader: Halis Tokur)

● First Aid Team– Provides initial treatments to the injured. (Team Leader: Umut Karaçay)

Team members are kept prepared through regular training and drills, ensuring the fastest and most accurate response to potential dangers. Your safety is our priority at D'Plaj Residence

Emergency Plan



Emergency Contact Numbers

The Ministry of Interior has merged the emergency numbers, including the 110 Fire Report Line, 112 Medical Emergency, 155 Police Emergency, 112 AFAD Hotline, 177 Forest Fire Report, and 158 Coast Guard, under a single number: 112

Emergency Call Center	112
Coronavirus Consultation Hotline	184
Chemical Consultation Hotline	114
Bodrum State Hospital	(0 252) 313 14 20
Bodrum Acibadem Hospital	(0252) 311 44 44
Bodrum American Hospital	444 4 478

“Use these essential communication numbers for quick and accurate intervention in emergencies.”

When calling the “**112 Emergency Call Center**” to report an emergency, it is important to provide clear answers to the operator’s questions. Being prepared before making the call will help speed up professional assistance.

Basement Floor Emergency Exit Plan

You can find the exit routes according to the Basement Floor Emergency Exit Plan.



BASEMENT FLOOR EMERGENCY EXIT PLAN

Ground Floor Emergency Exit Plan



You can find the exit routes according to the Ground Floor Emergency Exit Plan

GROUND FLOOR EMERGENCY EXIT PLAN

1st Floor Emergency Exit Plan

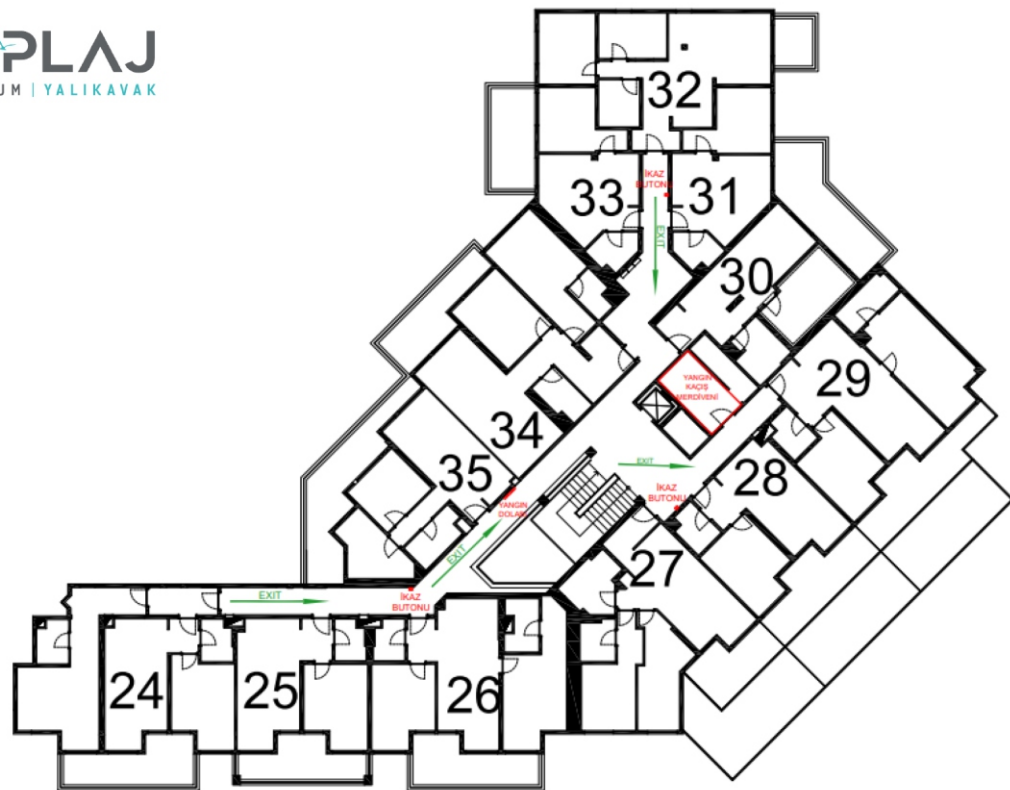
You can find the exit routes according to the 1st Floor Emergency Exit Plan.



1ST FLOOR EMERGENCY EXIT PLAN

2nd Floor Emergency Exit Plan

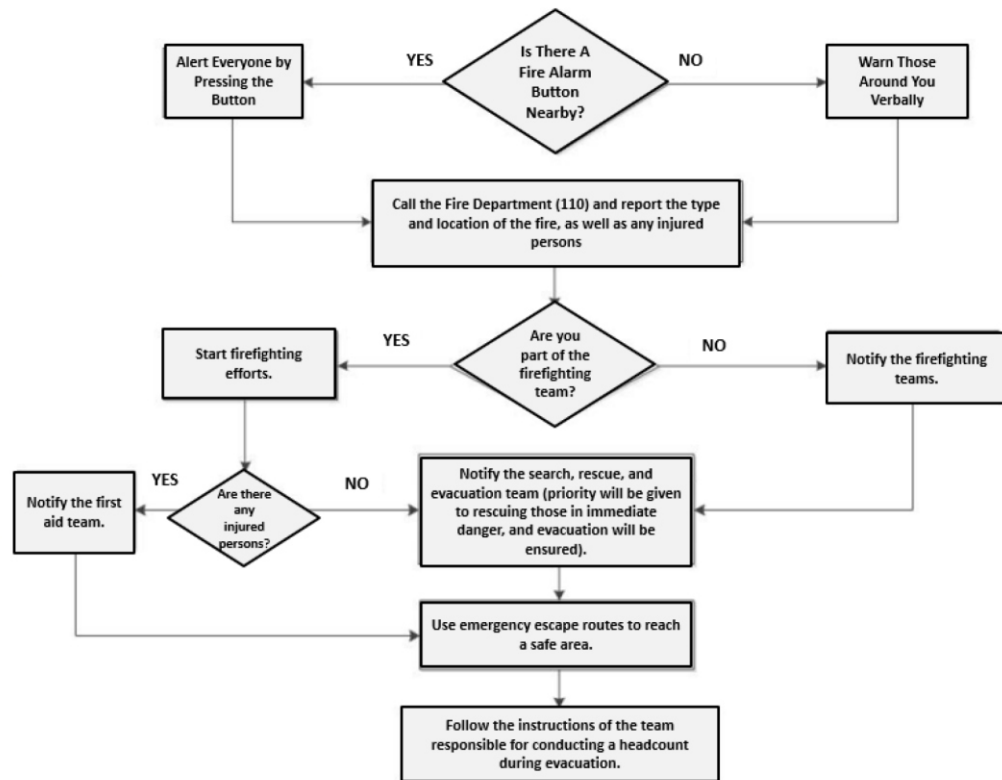
You can find the exit routes according to the 2nd Floor Emergency Exit Plan.



2ND FLOOR EMERGENCY EXIT PLAN

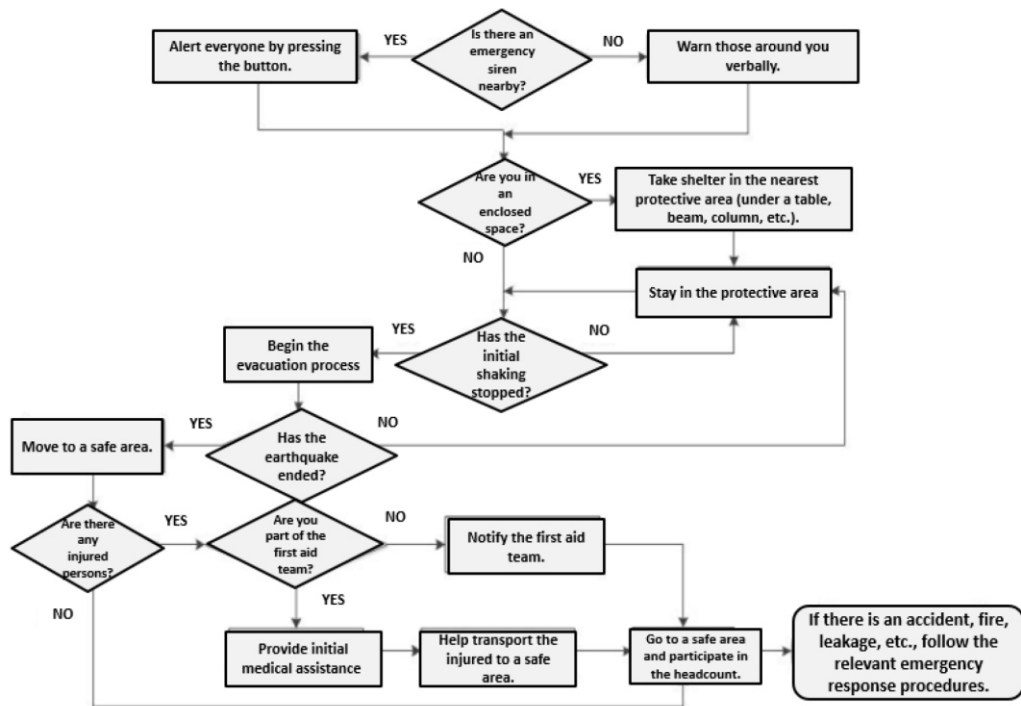
FIRE RESPONSE PLAN

In case of fire, an alarm is triggered, relevant teams are informed, and the fire department (112) is called. The fire is handled appropriately, injured individuals are evacuated and provided with first aid. Missing persons are identified, and after the fire is extinguished, an assessment is conducted, and a report is prepared.



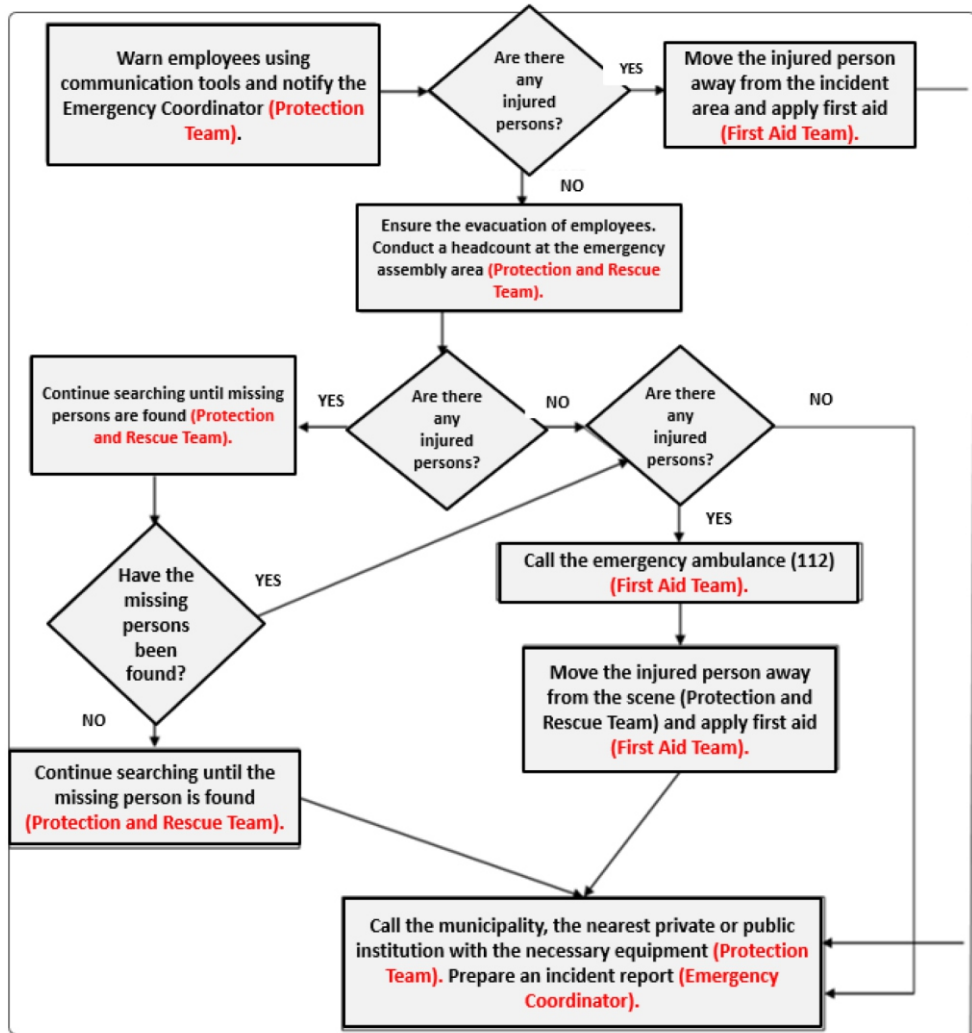
EARTHQUAKE RESPONSE PLAN

During an earthquake, individuals should move to a safe area and form a "life triangle." Once the shaking stops, the building should be evacuated safely. After the earthquake, missing persons are searched for, the injured receive medical attention, and relevant authorities are informed.



TSUNAMI/FLOOD RESPONSE PLAN

This plan outlines the emergency response process following a tsunami, flood, or water overflow. Employees are first warned, and emergency authorities are informed. If there are injured individuals, first aid is administered, and 112 is called if necessary. Employees are evacuated to a safe area, and a headcount is conducted. Missing persons are searched for, and rescue operations continue until they are found. Finally, communication with relevant institutions is established, and damage assessment and reporting are carried out.

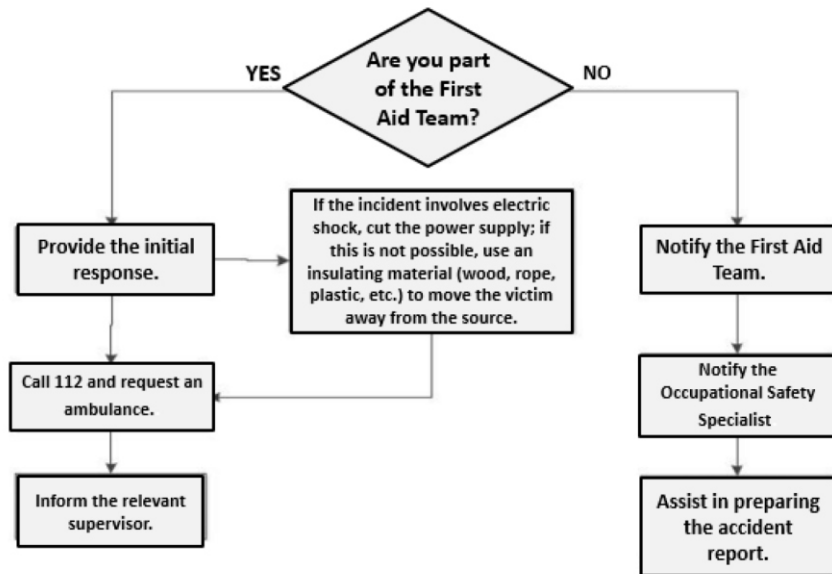


WORKPLACE ACCIDENT RESPONSE PLAN

Preventive Measures:

- Employees receive certified occupational safety training and are made aware of potential risks.
- The facility ensures a risk-free, smooth, and comfortable environment for guests and employees by maintaining all machinery, equipment, and tools properly.
- The facility has an assigned Occupational Safety Specialist and Workplace Doctor.
- Kitchen and service staff undergo all legally required health tests before starting work (hygiene, nail inspection, lung X-ray, audiometry, HIV, etc.).
- Personal protective equipment is used appropriately based on risk analysis.

REPORT ANY POTENTIALLY DANGEROUS SITUATION TO THE RELEVANT MANAGER IMMEDIATELY!





OCCUPATIONAL SAFETY MEASURES

PREVENTIVE ACTIONS

- Flammable, explosive, and combustible materials should not be placed randomly. Guests should not bring such materials into their rooms, regardless of their nature.
- Flammable materials should not be kept within the facility.
- Smoking and open flames are strictly prohibited in designated no-smoking areas; smoking is only allowed in designated open areas.
- Automatic fire and smoke detectors are installed in all indoor spaces and rooms, ensuring an immediate response to any smoke detection.
- Each area is equipped with a siren/alarm system connected to reception, with its location indicated on the emergency plan.
- Fire extinguishers, appropriate for different fire types, are placed in accessible locations, kept ready for use, and regularly inspected.
- Emergency exit routes are clearly marked with signs.
- Emergency staircases are maintained according to regulations, ensuring they are always accessible.
- In the event of an emergency, elevators automatically stop at the lobby floor and become unavailable for use.

IN CASE OF AN EMERGENCY, FOLLOW THE ABOVE MEASURES AND PROCEED TO THE DESIGNATED ASSEMBLY POINTS AS INDICATED IN THE EMERGENCY PLAN.

OCCUPATIONAL SAFETY MEASURES



OCCUPATIONAL SAFETY MEASURES



OCCUPATIONAL SAFETY MEASURES



**"Workplace safety is not an option; it is a necessity.
Make safety a habit to protect your life and your loved
ones."**

Remember!!!

**Workplace safety rules are not just regulations; they are
a guarantee that ensures you can return to your loved
ones."**
